

Sir Douglas Park, Thornaby



£145,000

IH INGLEBY HOMES





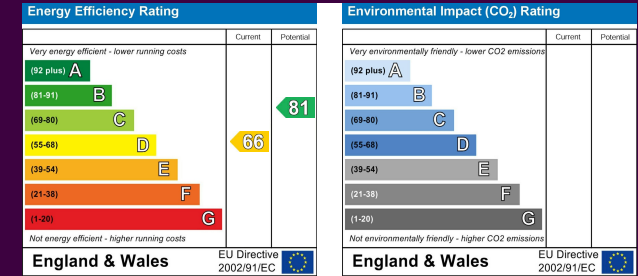
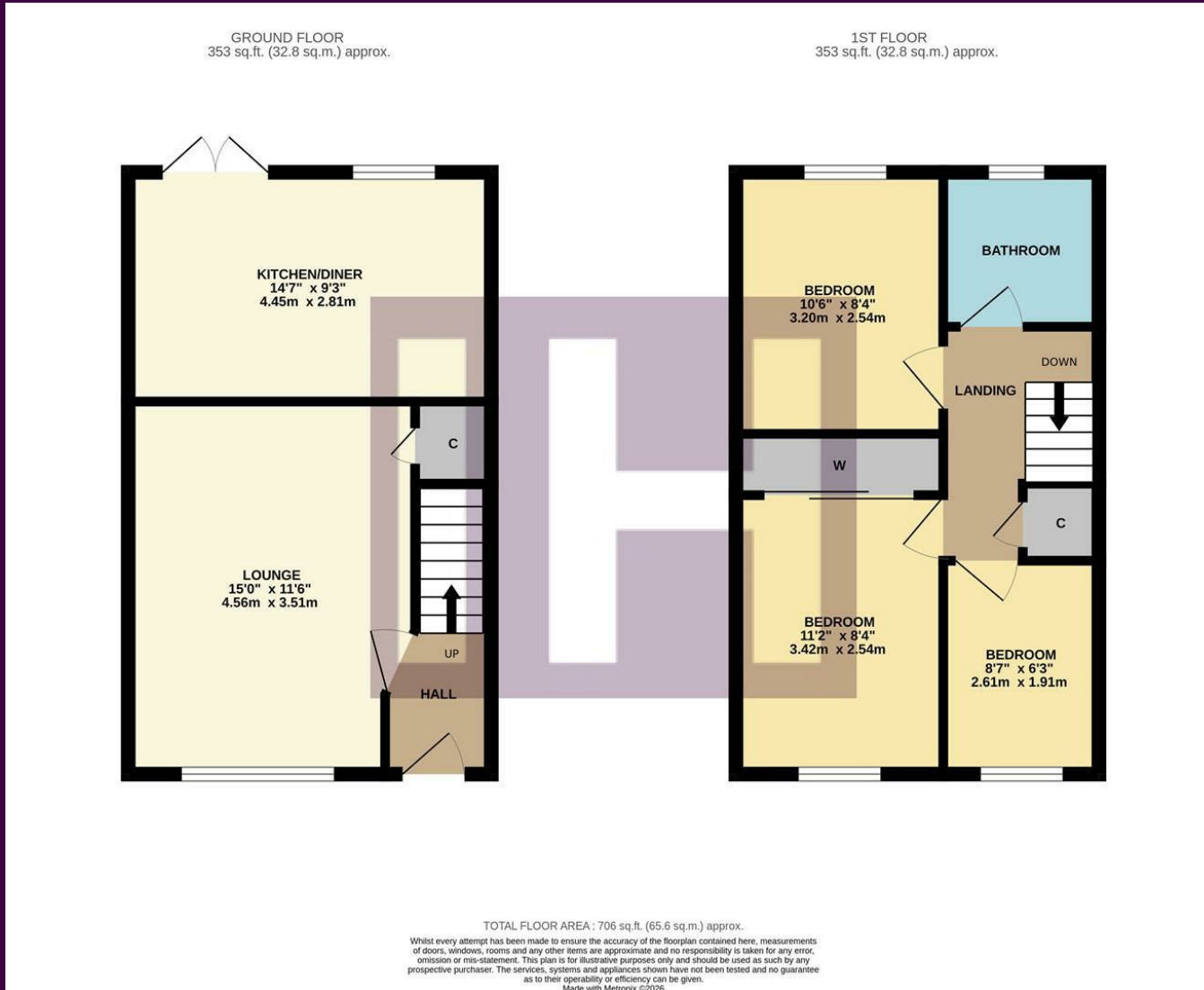
This attractive three bedroom, semi-detached property is available with 'No Forward Chain' - and early viewing is advised.

Situated within this popular, modern Thornaby development, whilst enjoying front and rear gardens, and a lengthy side drive which allows ample off-road parking.

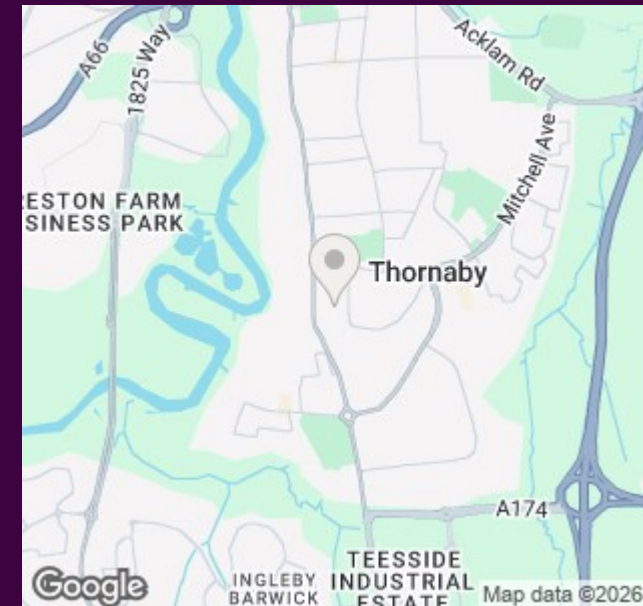
Internally, the accommodation is smart and fresh, with new floorings. Briefly comprising an entrance hall, spacious lounge with 'Oak' flooring, and a separate open-plan kitchen/diner with 'French' doors to the rear garden on the ground floor. The first floor delivers three good bedrooms, the larger primary with fitted sliding robes, separate family bathroom with white suite and over/bath shower.



The Layout



The Location



Council Tax Band:
Tenure:

C
Freehold



- Popular, modern Thornaby development
- Ideal first purchase or 'buy to let'
- Spacious lounge with 'Oak' flooring, separate open-plan kitchen/diner
- Three first floor bedrooms, primary with fitted sliding robes
- Front and rear gardens, side drive
- Full UPVC double glazing, gas central heating